

## GS SERIES | GREYWATER FILTERS

Small in size, but big in performance, the GS series Greywater Filters are perfect for an irrigation drip zone with a limited number of greywater sources.



| PRODUCT CODE | PUMP   | POWER USAGE               | TOTAL SURGE CAPACITY (GALLONS) |
|--------------|--------|---------------------------|--------------------------------|
| GS-40-2SP    | 1/2 HP | 115v / 5.5 amp / 650 watt | 40                             |
| GS-80-2SP    | 1/2 HP | 115v / 5.5 amp / 650 watt | 80                             |

| GREYWATER FIXTURE | SURGE REQUIRED (GALLONS) |
|-------------------|--------------------------|
| Bathroom Sink     | .25*                     |
| Shower            | 25*                      |
| Washing Machine   | 25*                      |
| Bathtub           | 50*                      |



40 Gallon External Surge Tank included with GS-80-2SP.

\* Average usage.

### GS SERIES GREYWATER FILTERS

#### FEATURES:

- Weight: 105 lbs
- Dimensions: L: 29", W: 31.75", H: 24"
- 2" intake port
- One Stainless Steel 150 Mesh Filter Basket
- 1/2 HP multi-stage pumping
- Large pumping chamber
- Bolt down integrated lid system
- Convenient 13" diameter filter access
- Removable filter carriage
- Surge tank expansion port for Add-on Surge Tanks
- Includes Secondary Filter & System Indicators

## GS SERIES | GREYWATER FILTERS

### TECHNICAL SPECIFICATION

MODELS: GS-40-2SP, GS-80-2SP

(greywater filter & pumping unit)

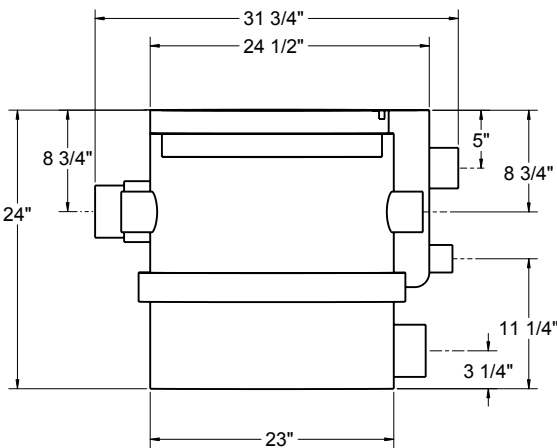
The GS Series Greywater Filter shall include a top-access filter basket with a detachable 100 micron (150 mesh) 316 stainless steel filter element. The Greywater Filter shall feature a removable, integrated filter carriage, providing unobstructed access to the pump chamber. The Filter Carriage shall also include an integrated overflow. The Greywater Filter shall include a self regulating back wash system capable of removing debris from the exterior of the primary stainless steel filter. The Greywater Filter shall include a high-pressure pump capable of producing

at least 75 feet of head and a float switch to control the pumping operation. The Greywater Filter shall include an internal stainless steel support system to ensure that internal components are held securely in place. The Greywater Filter shall include an external 150 mesh secondary filter with dual pop-up performance indicators to allow for optional expansion via 4 module expansion ports. The Greywater Filter shall include 6 internal pipe connection ports. The Greywater Filter shall include a bolted lid with an inner filter element access cap for convenient filter removal.

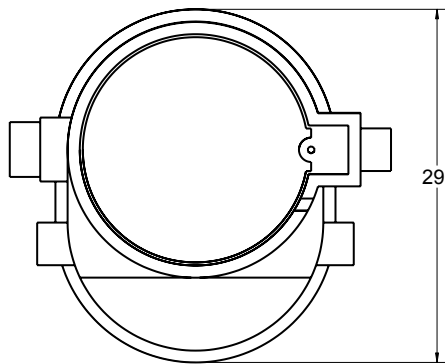
The Greywater Filter shall provide 40 gallons of built-in surge capacity. The GS-80-2SP Greywater Filter shall include an additional 40 gallon external surge tank which shall feature two 4" integrated connection ports and an air vent located on the top of the unit.

The Greywater Filter shall be manufactured by Flotender, a division of the Filtrific Company LLC, Bellevue Washington.

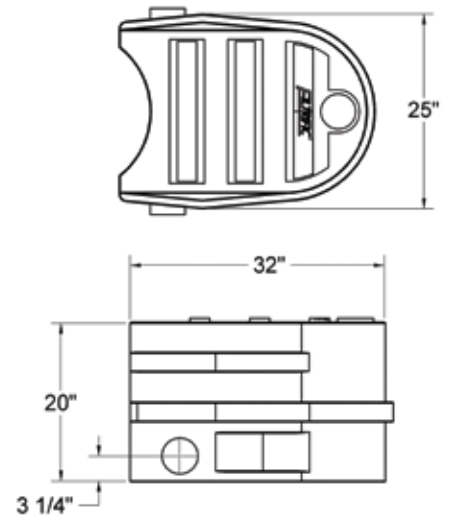
U.S. Patent: 8,961,782 B2



GS SERIES  
GREYWATER FILTER - SIDE



GS SERIES  
GREYWATER FILTER - TOP



40 GALLON EXTERNAL SURGE  
TANK - TOP, SIDE